



# Drug Use in Ireland & Northern Ireland

---

## First Results from the 2010/11 Drug Prevalence Survey

Dr Justine Horgan  
Senior Researcher  
National Advisory Committee on Drugs



# Drug Use in Ireland & Northern Ireland

---

## **First Results from the 2010/11 Drug Prevalence Survey**

National Advisory Committee on Drugs (NACD)  
in Ireland  
&  
Public Health Information and Research Branch  
in Northern Ireland (DHSSPS)



**NACD**

National Advisory  
Committee on Drugs

# Aims & Purpose

---

- Obtain reliable prevalence rates
  - Illicit drugs, prescribed and over-the-counter medicines, alcohol & tobacco
  - Alcohol and cannabis dependence
- Key indicator for policy
  - Advise Govt on prevalence of drug use in Ireland
  - European Monitoring Centre for Drugs and Drug Addiction (EMCDDA)



National Advisory  
Committee on Drugs

# First Results from the 2010/11 Drug Prevalence Survey

---

- **Bulletin 1**
  - 2010/11 first prevalence results
  - Ireland, Northern Ireland, Island of Ireland
  - Trends (2002/3, 2006/7, 2010/11)
  - Breakdowns by age and gender
- **Focus on ROI figures today**
  - Some comparisons
    - EU (selection)



NACD

National Advisory  
Committee on Drugs

# Methodology

---

- Representative sample (15-64 yrs in Ireland)
- Response rates and sample size
  - Ireland: 60% n=5,134
- Fieldwork Oct 2010 – June 2011
- Key prevalence measures
  - Ever used a drug (lifetime prevalence)
  - Used a drug within the last year (recent use)
  - Used a drug within the last month (current use)



**NACD**

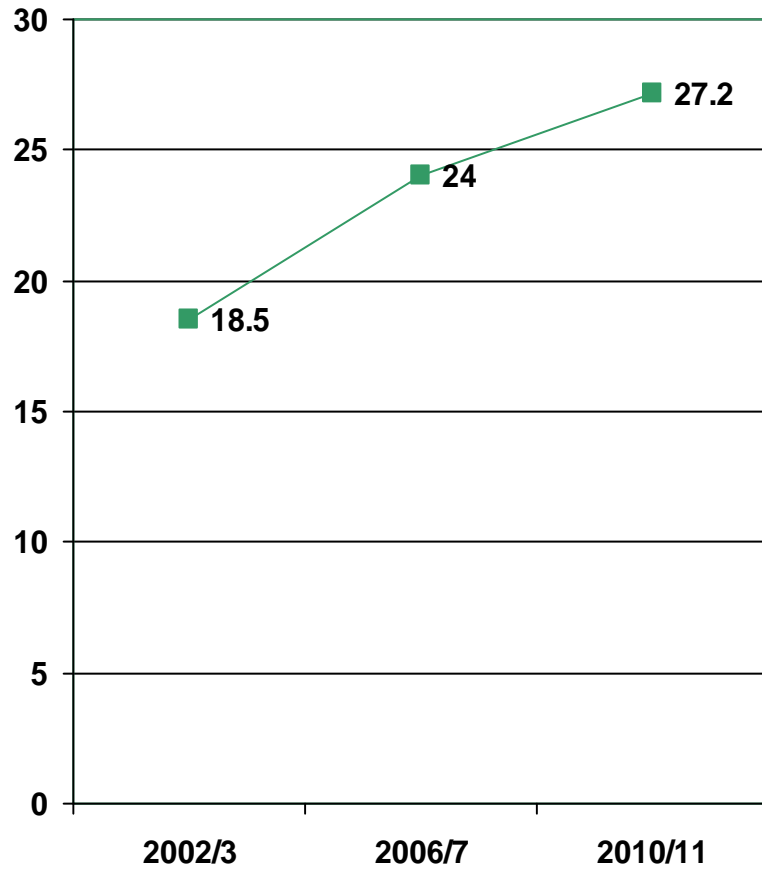
National Advisory  
Committee on Drugs

## Indicators of drug use

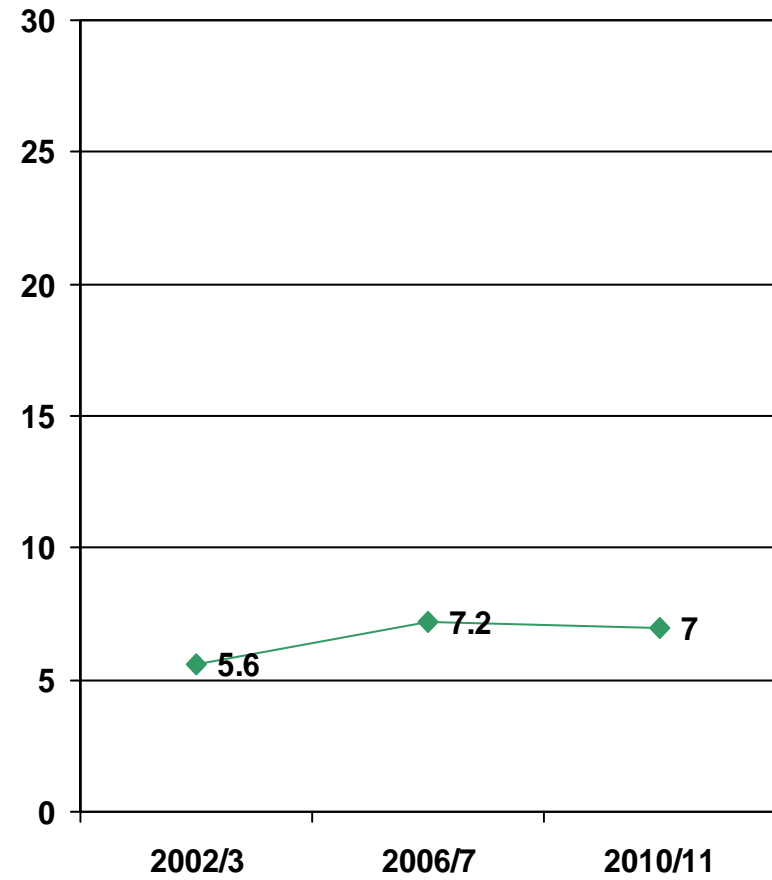
---

- **Lifetime (LT)**
  - Valuable for estimating length of drug use, continuation/discontinuation rates BUT
  - Tendency for an upward trend
    - Changes reflect mainly cohort replacement
- **Last Year (LY)**
  - Reflects current situation
  - More appropriate for informing policy

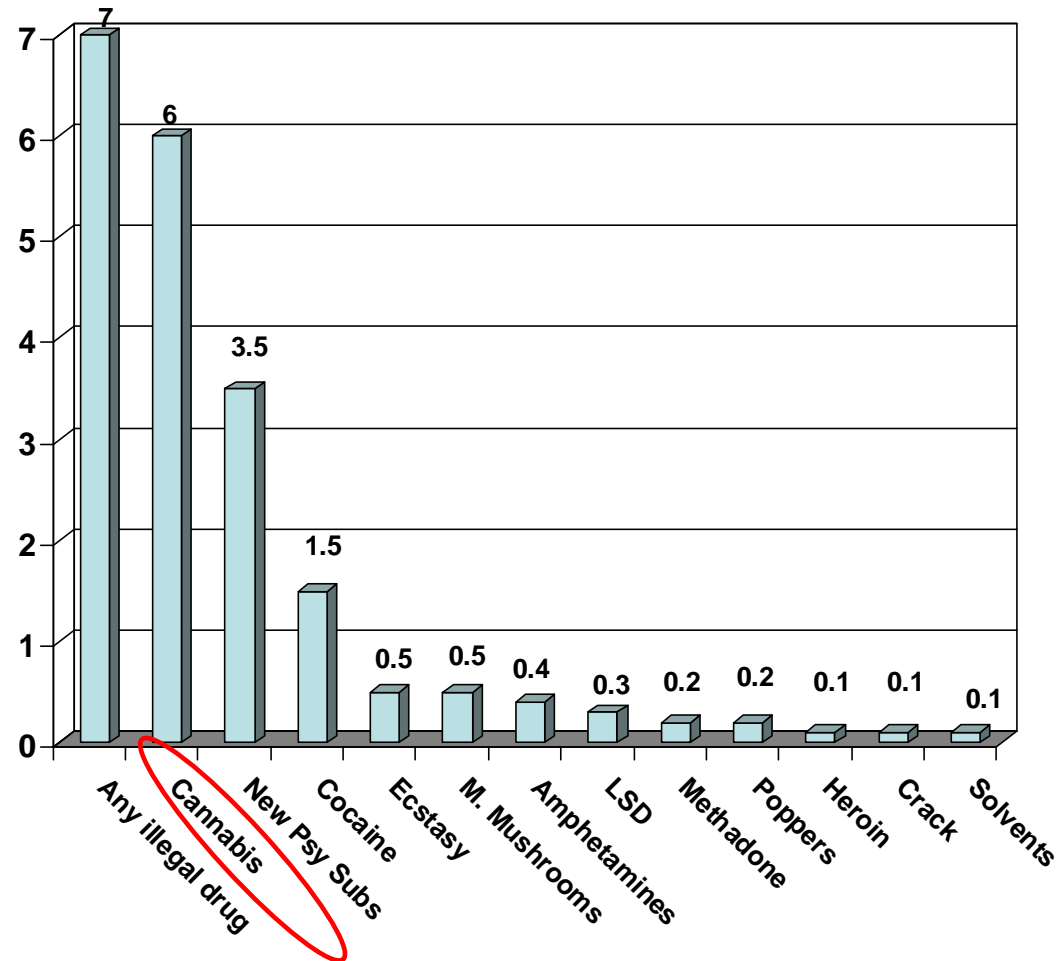
Lifetime Trends  
Any Illegal Drug (%)  
Ireland



Last Year Trends  
Any Illegal Drug (%)  
Ireland



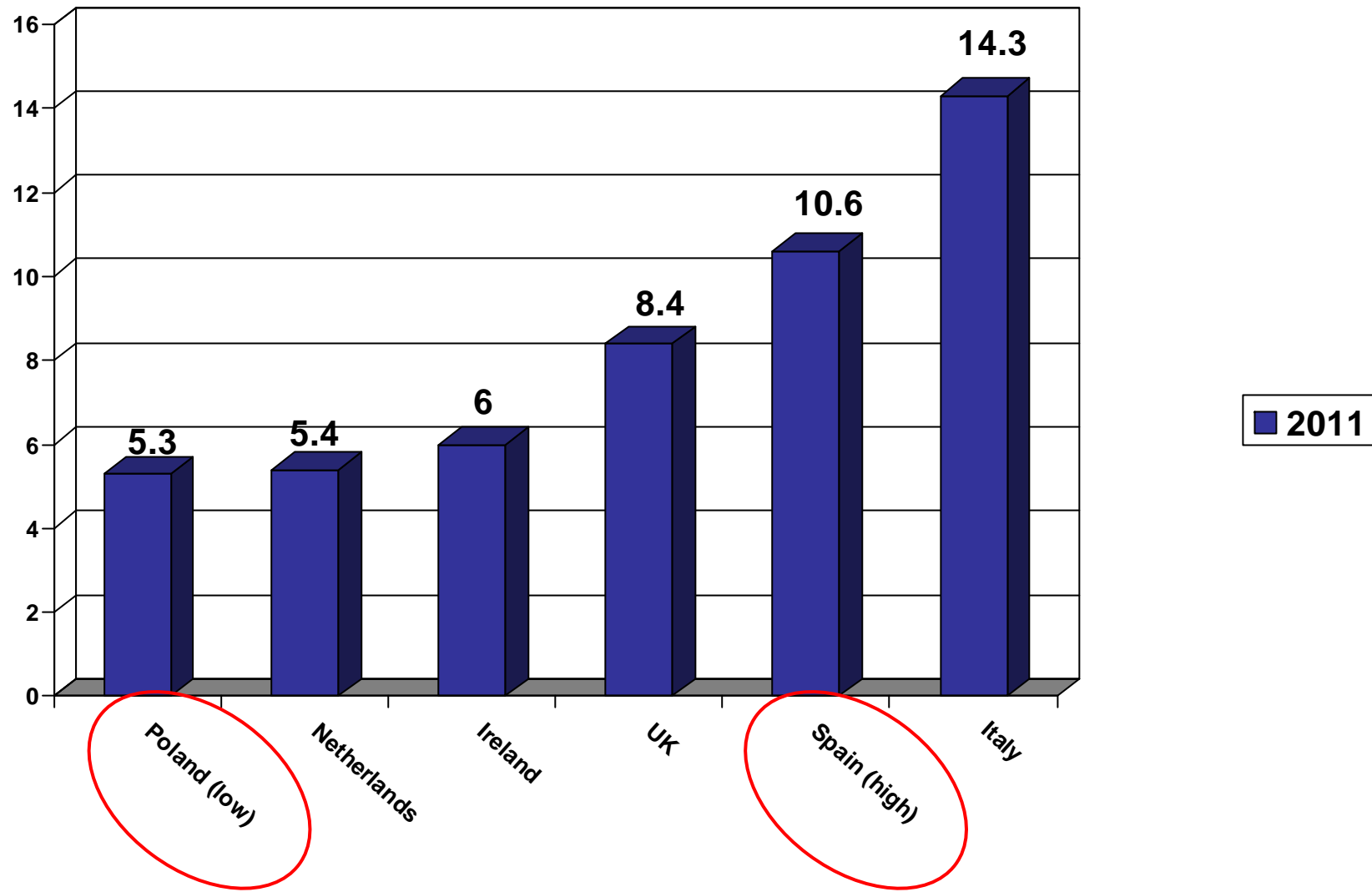
## Last Year prevalence (%) (Adults 15-64)



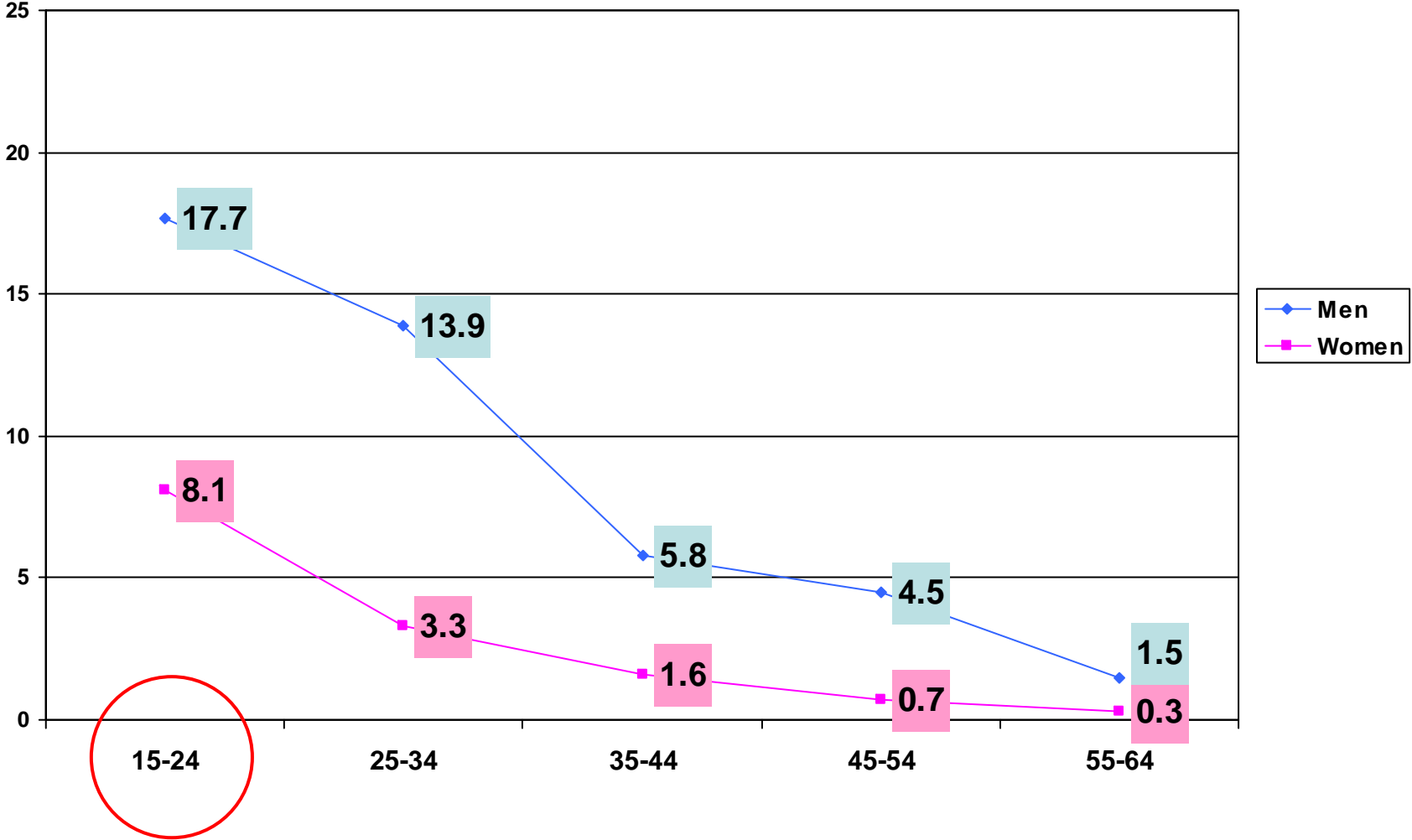
# Last Year (%) Cannabis Trend 2002/3, 2006/7 and 2010/11



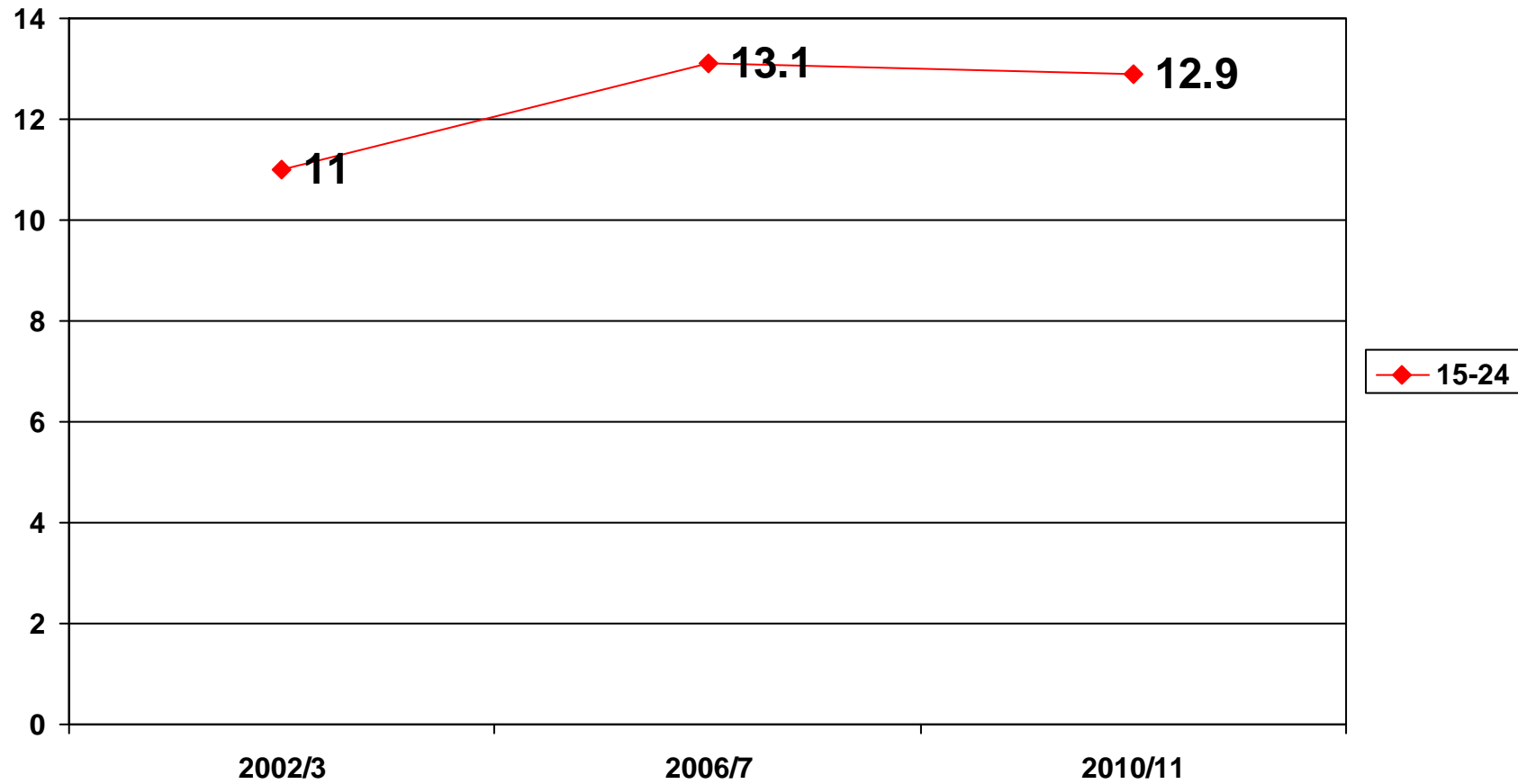
## Last year Cannabis (%) (EU selection)



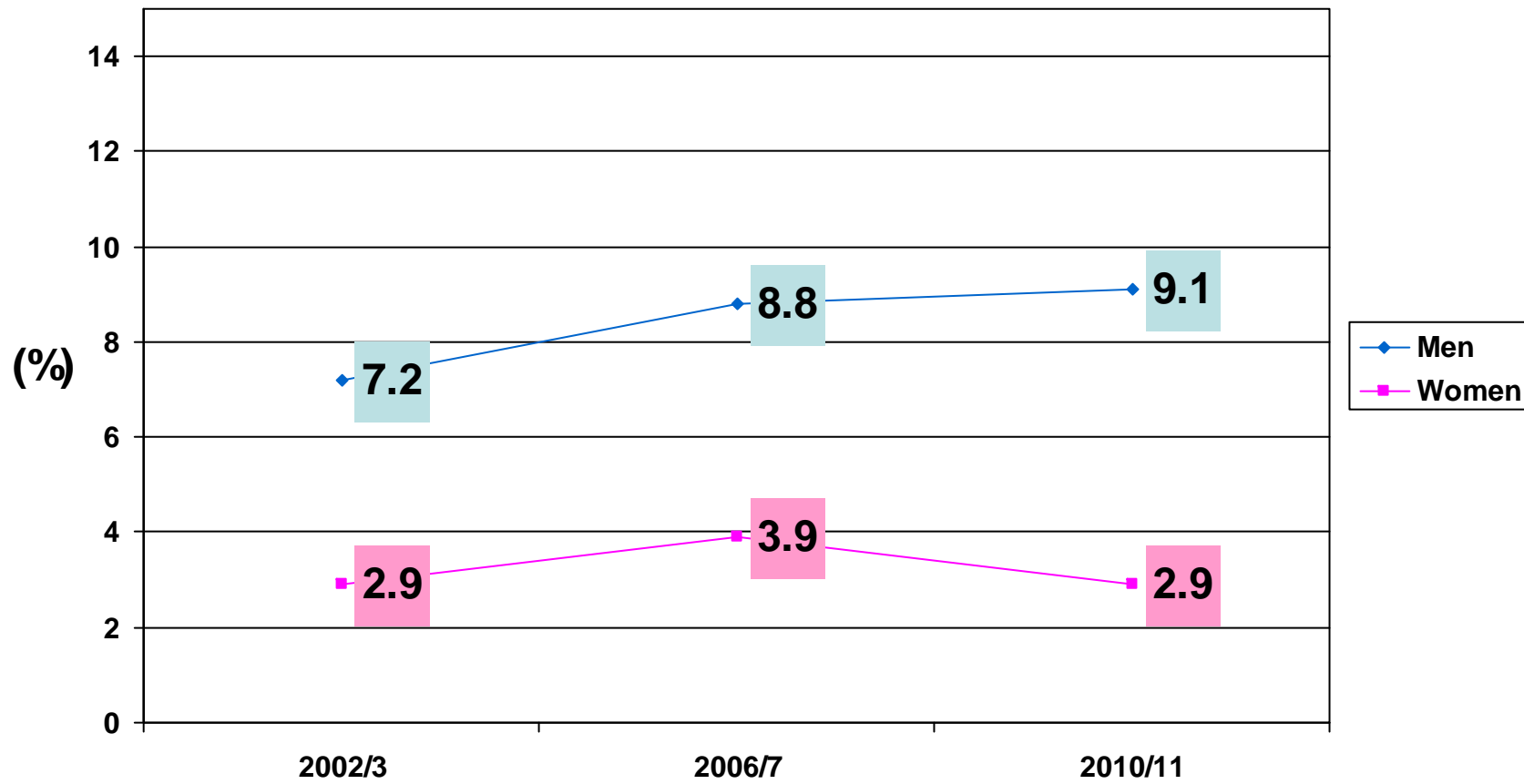
# Last year (%) Cannabis by age by gender



Last Year (%) Cannabis (15-24 yrs)  
Trend 2002/3, 2006/7 and 2010/11

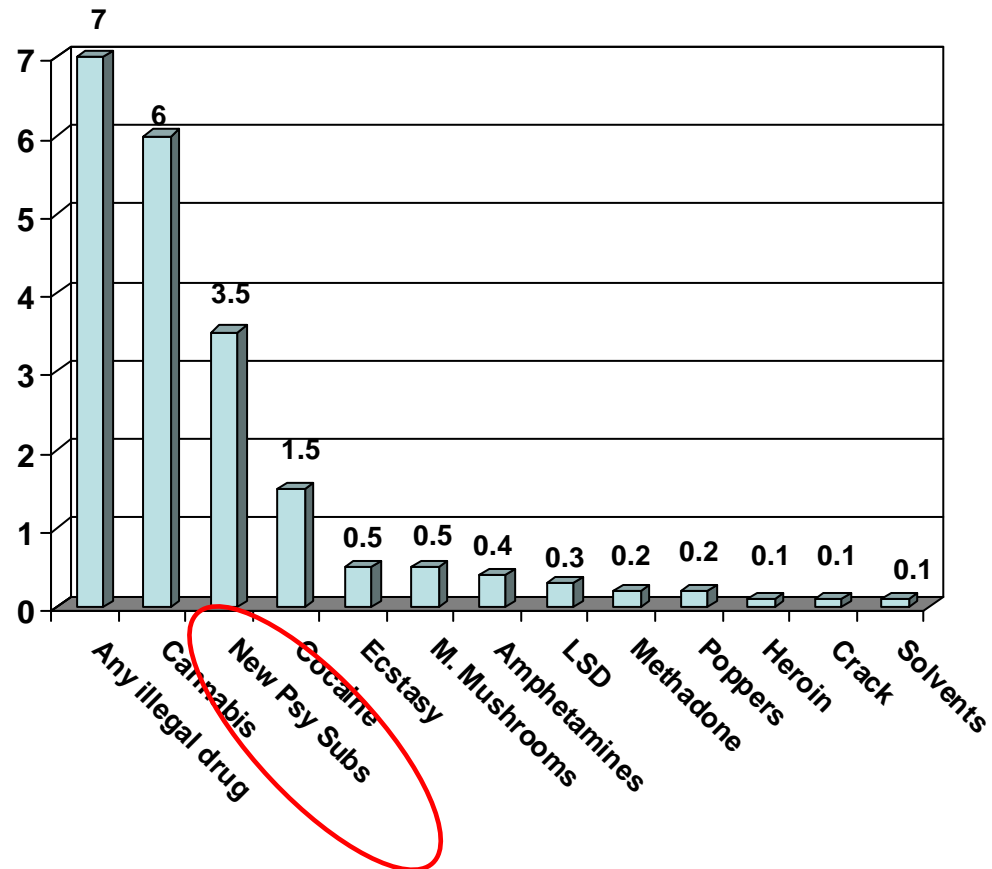


# Last Year (%) Cannabis by gender Trend 2002/3, 2006/7 and 2010/11

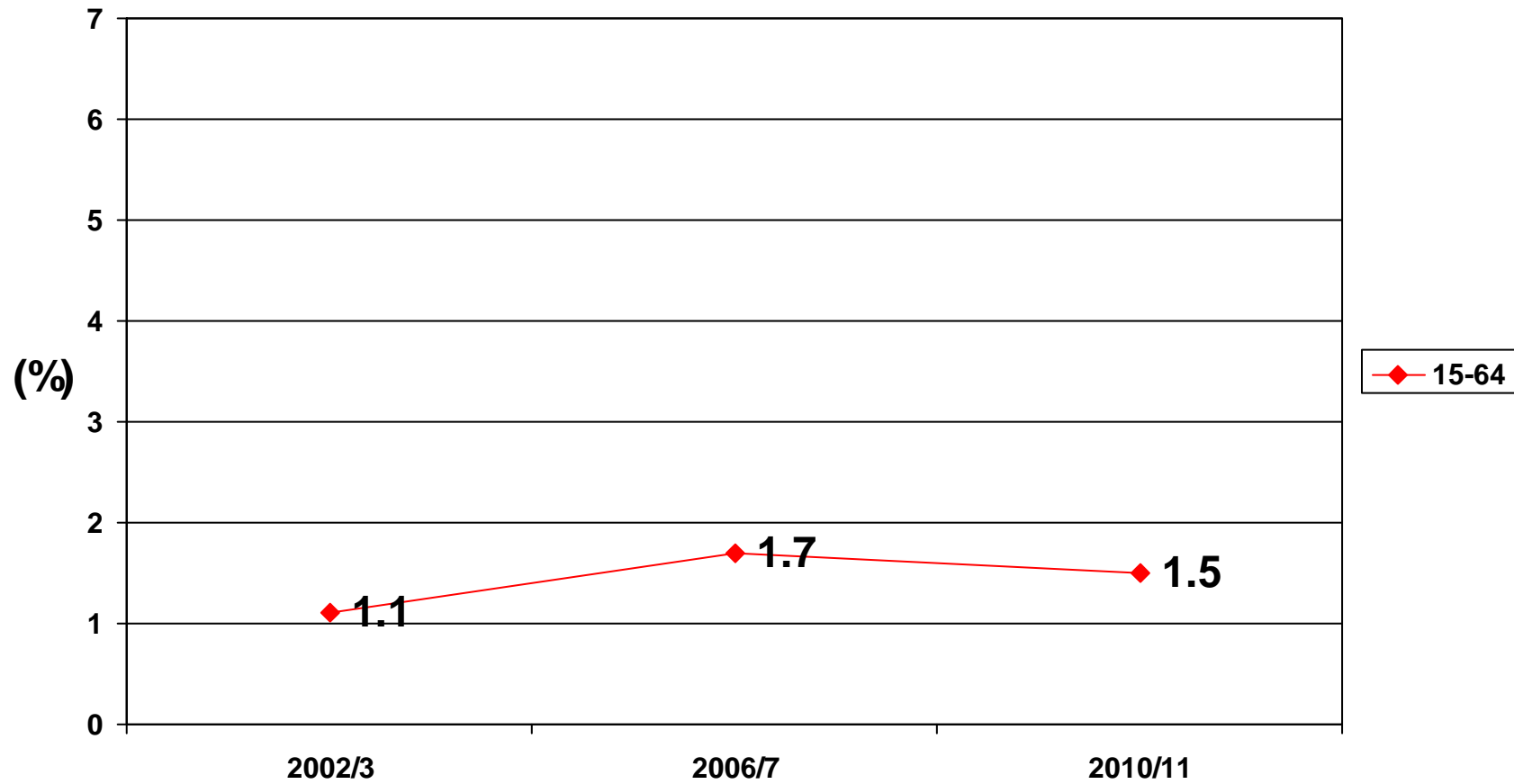


Last Year prevalence (%) (Adults 15-64)

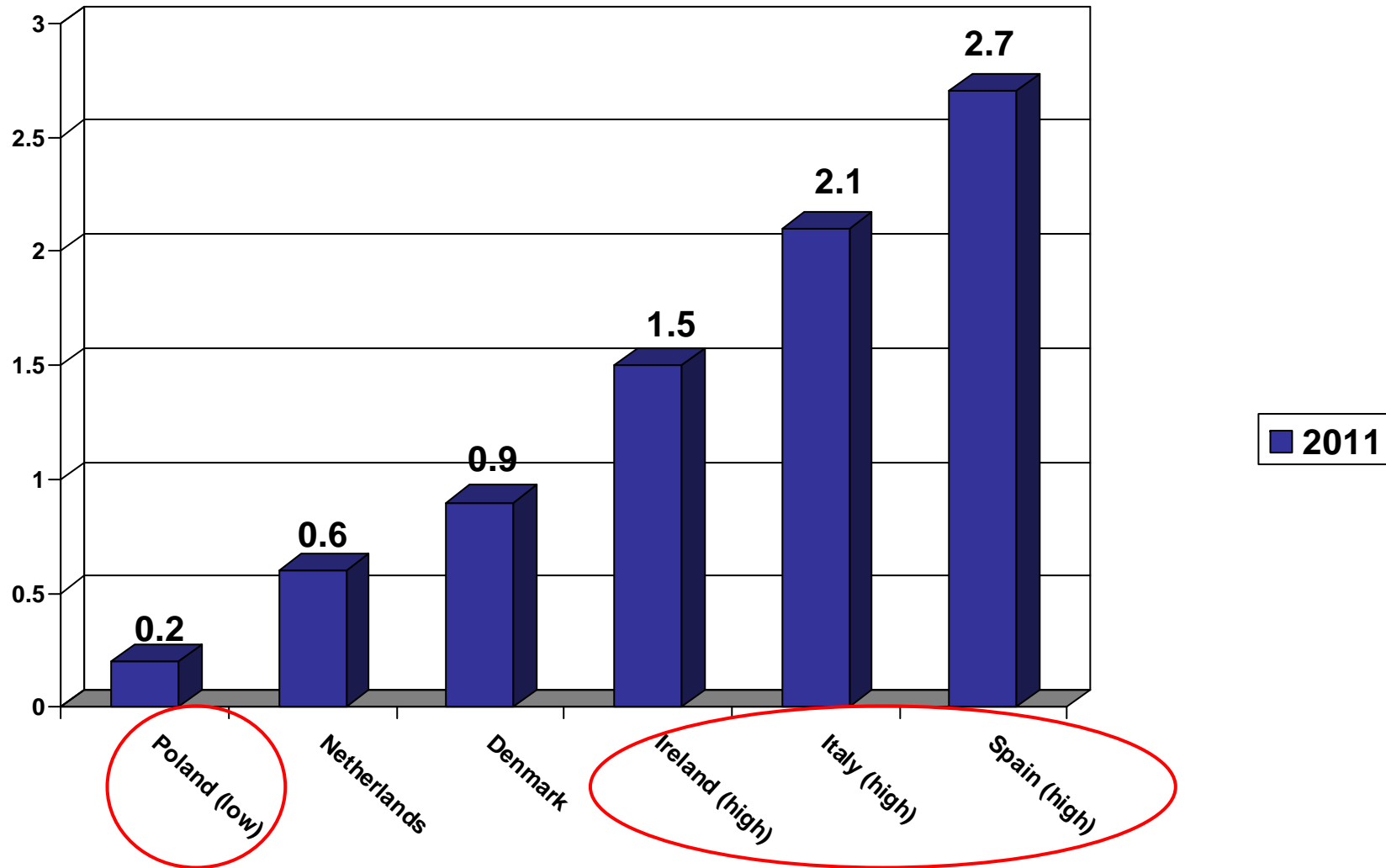
### Last year drug Use (%)



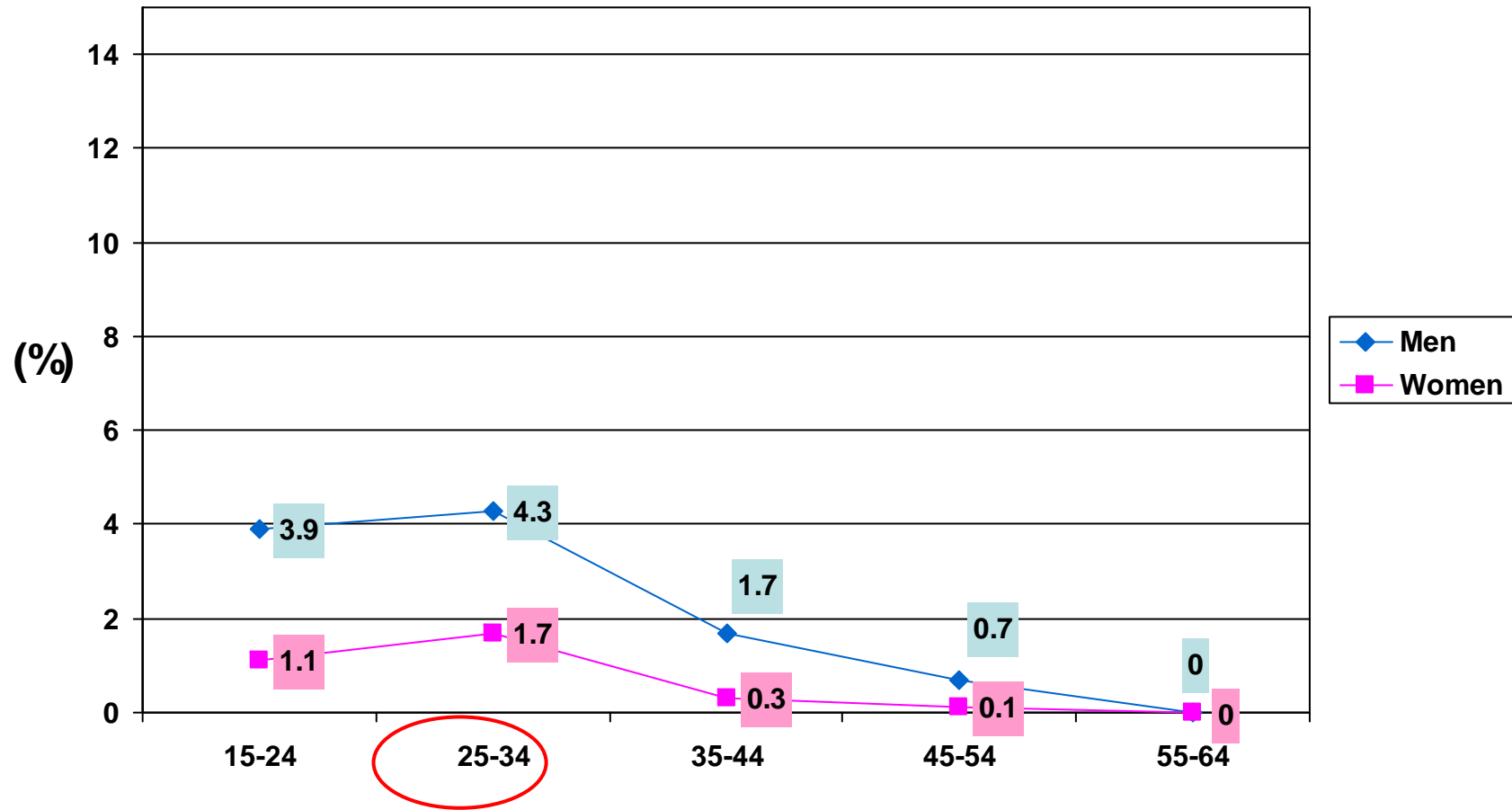
Last Year (%) Cocaine (incl crack)  
Trend 2002/3, 2006/7 and 2010/11



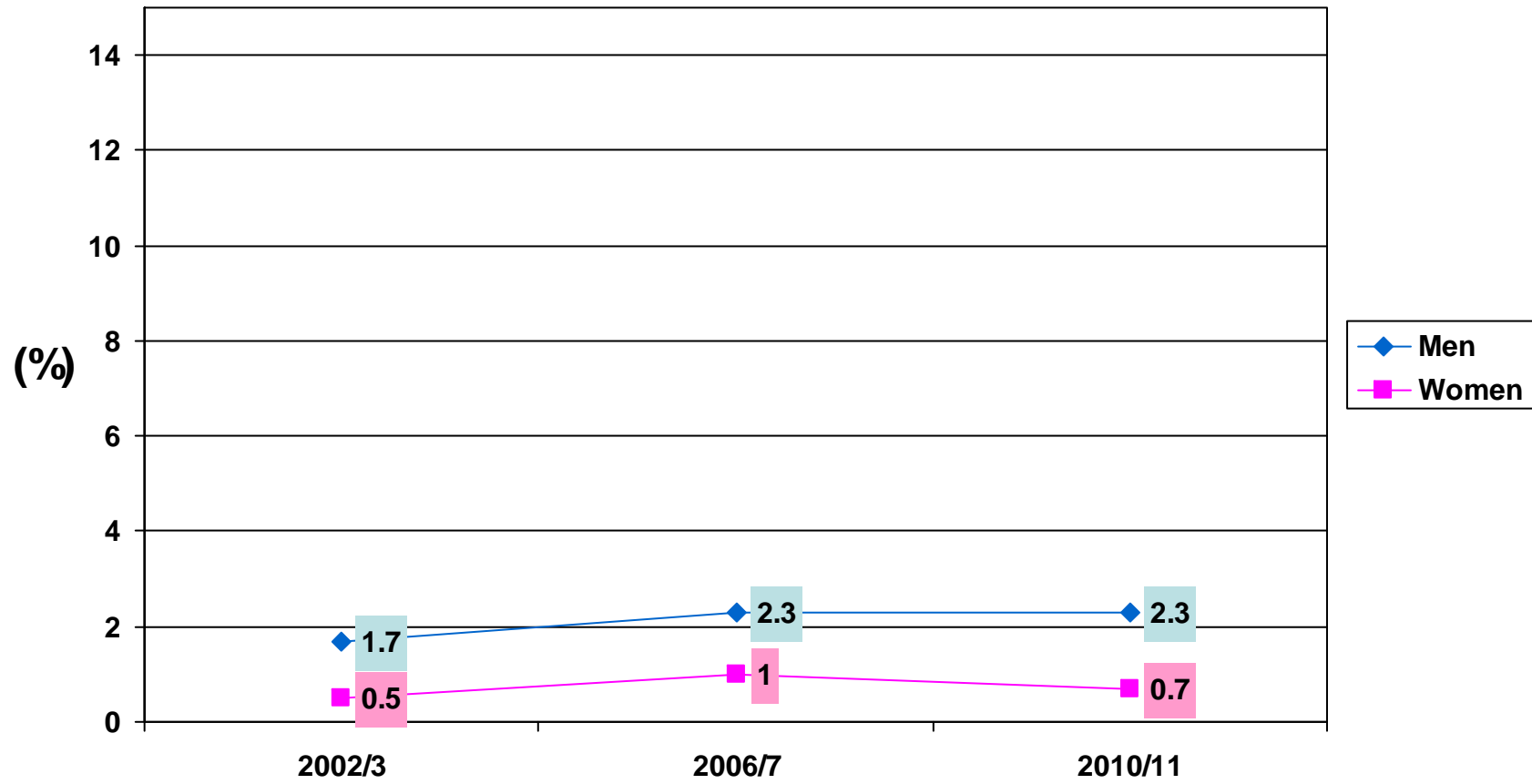
## Last year Cocaine (%) (EU selection)



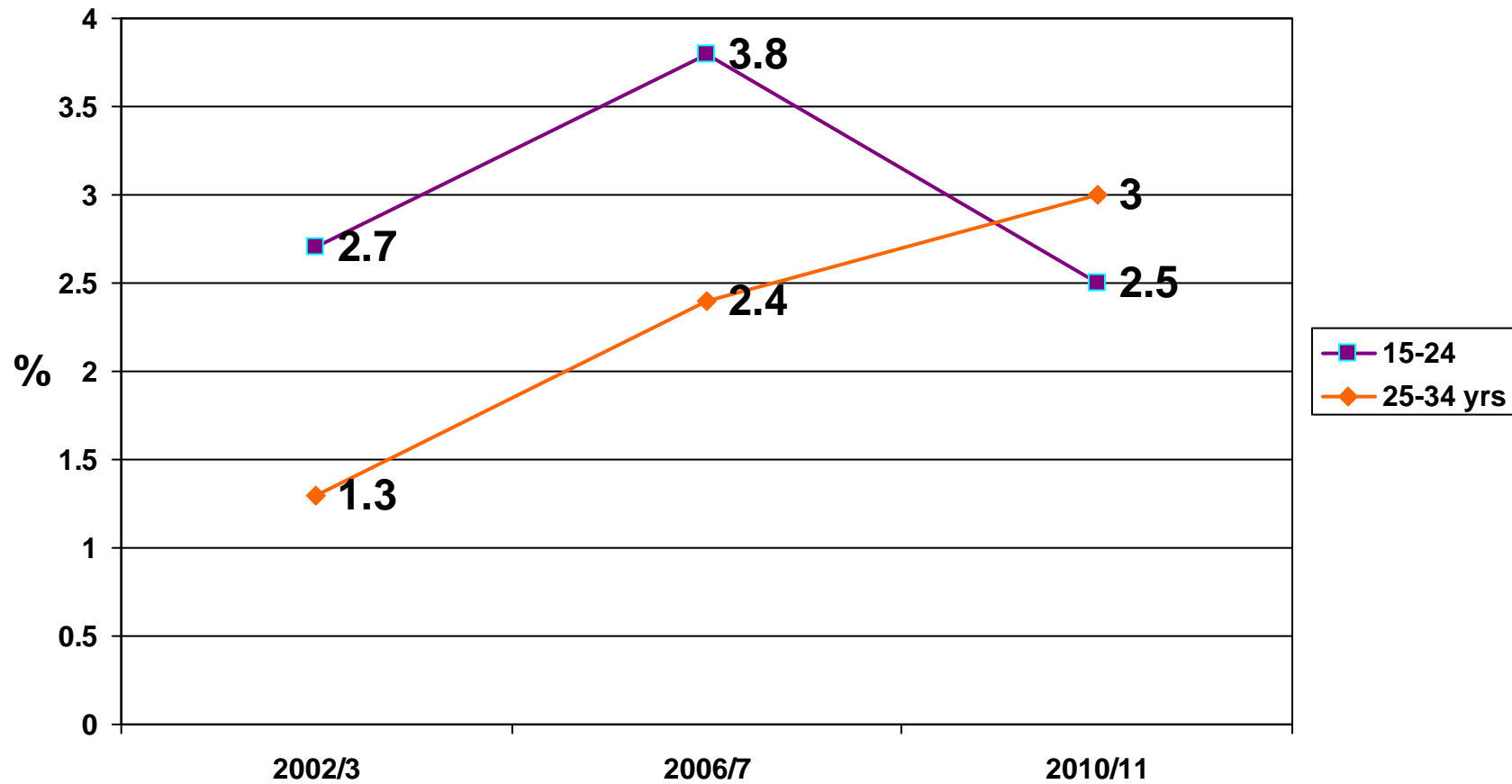
# Last year (%) Cocaine (incl Crack) by age by gender



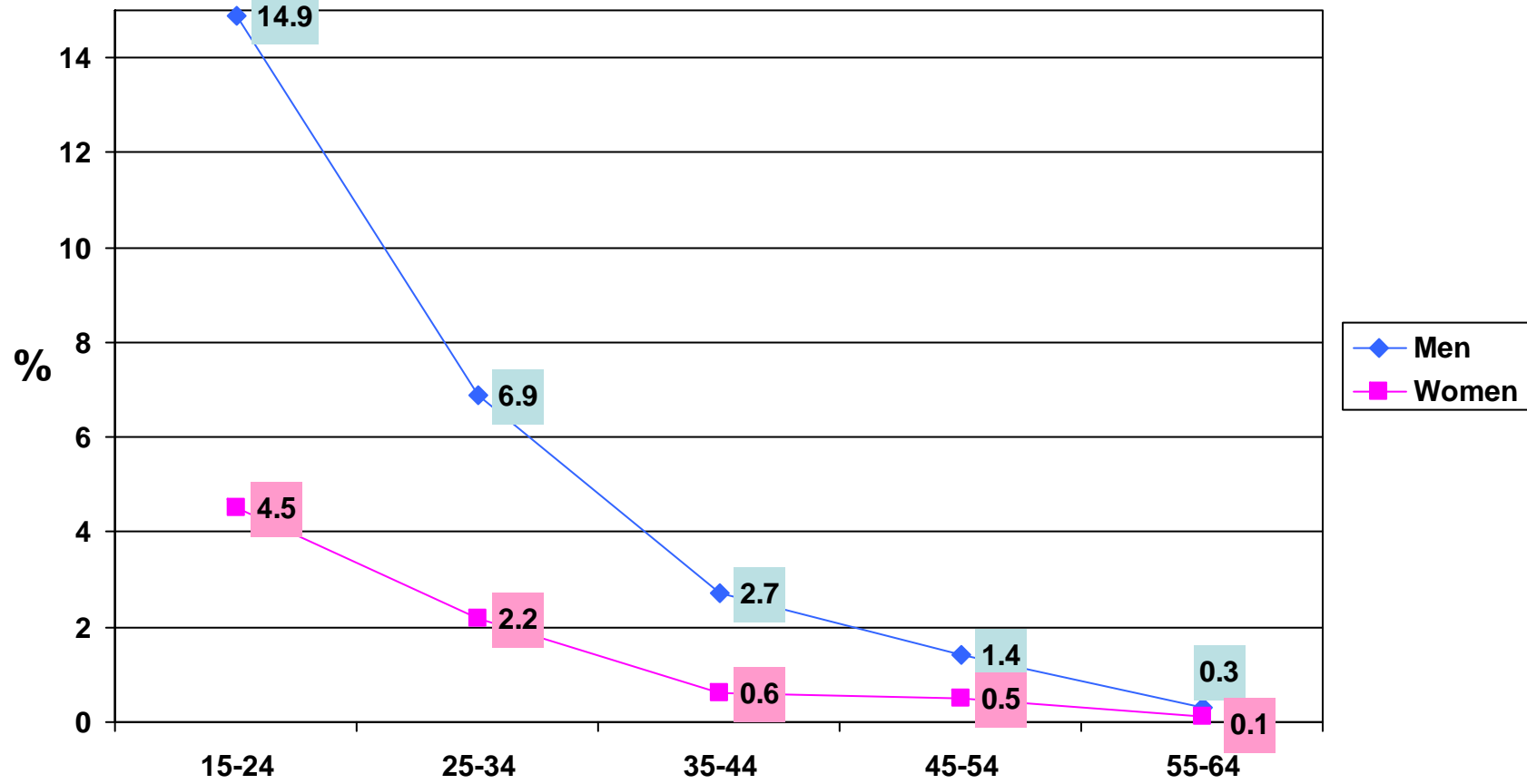
# Last Year (%) Cocaine (inc crack) Trend 2002/3, 2006/7 and 2010/11



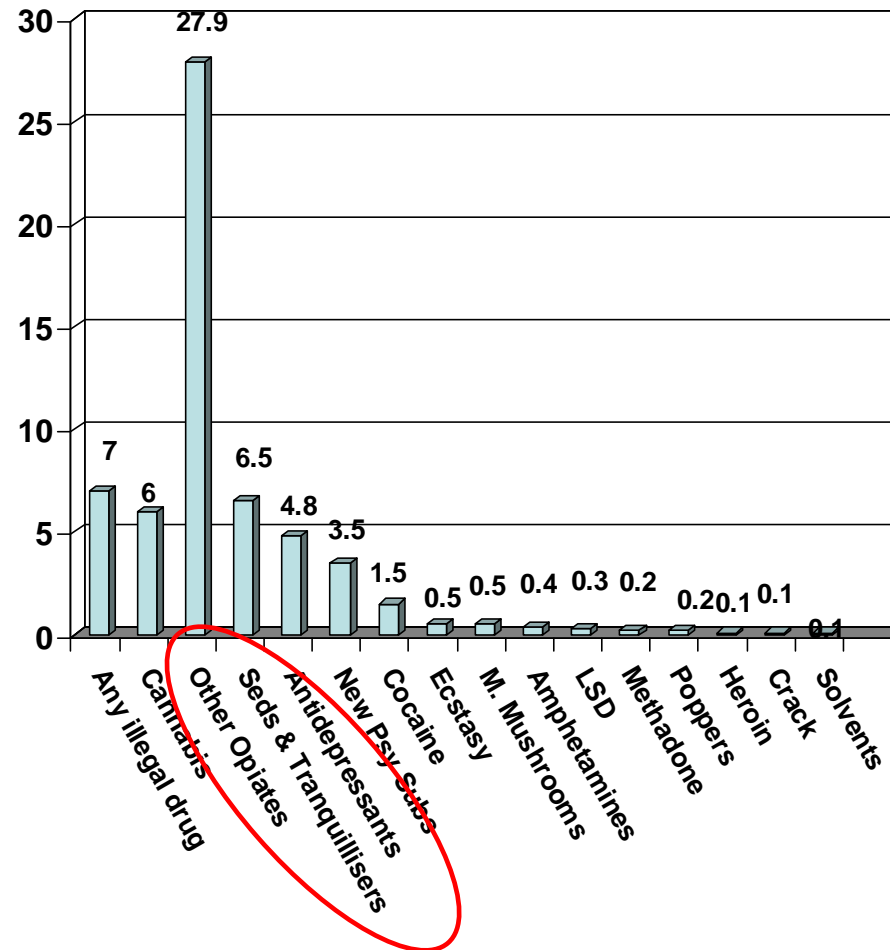
Last Year (%) Cocaine (incl crack), (25-34 yrs)  
Trend 2002/3, 2006/7 and 2010/11



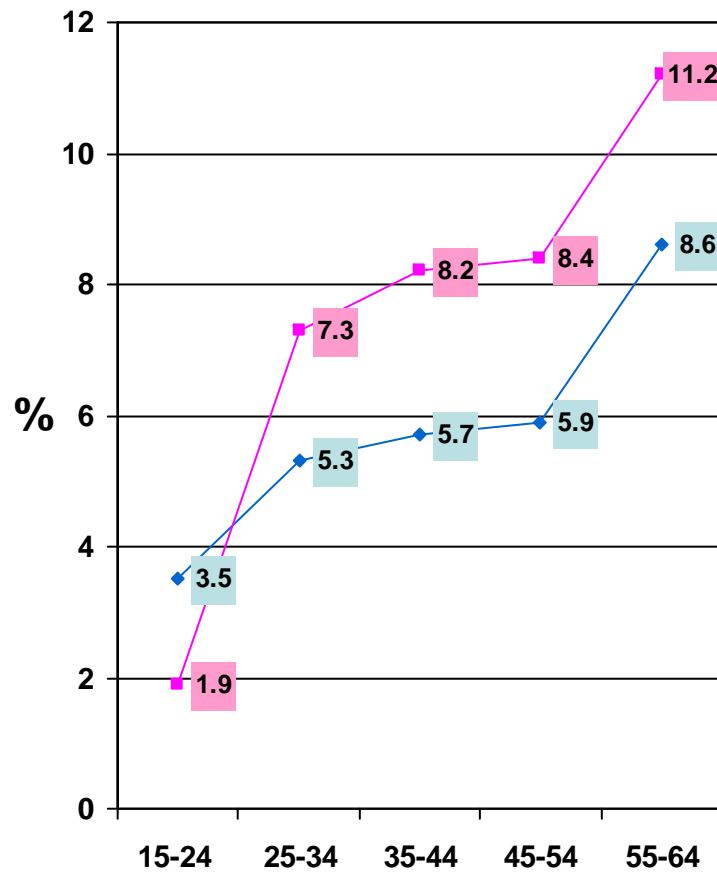
# Last Year (%) New Psychoactive Substances by age by gender



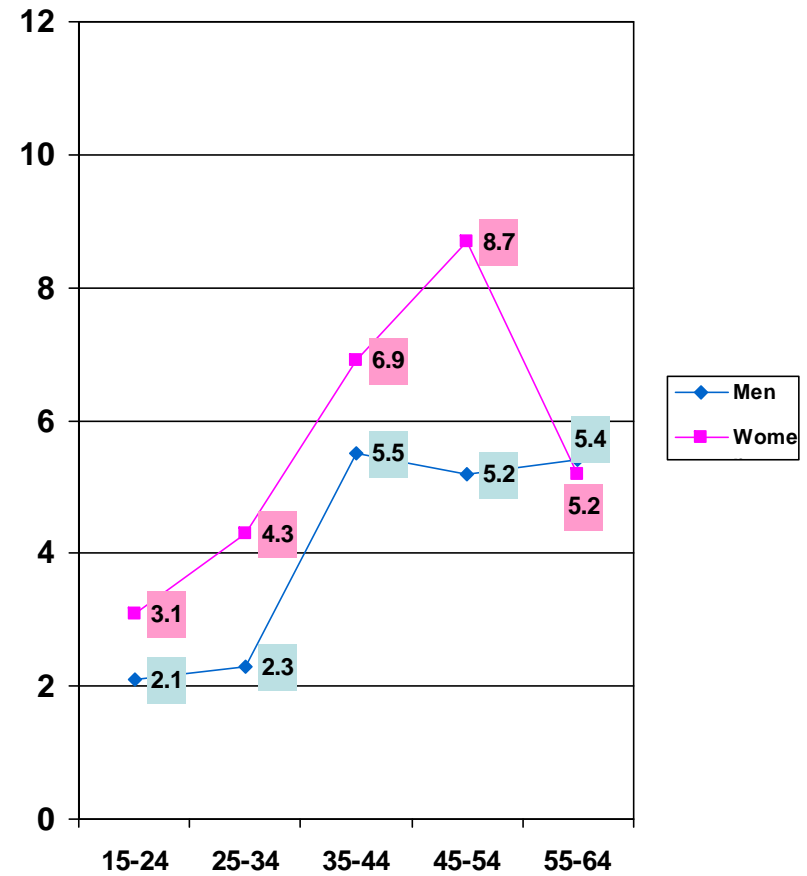
## Last Year prevalence (%) (Adults 15-64)



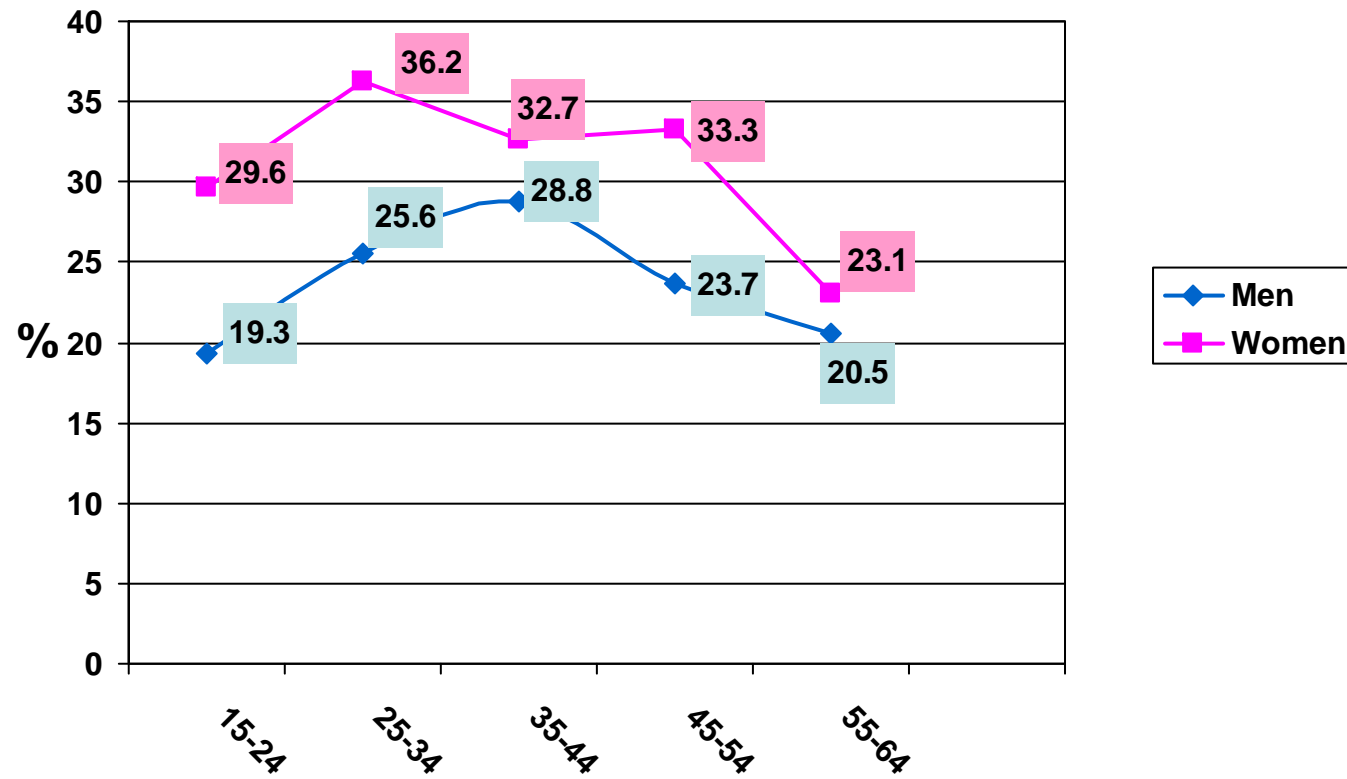
Last Year (%)  
Sedatives/Tranquillisers by  
age by gender



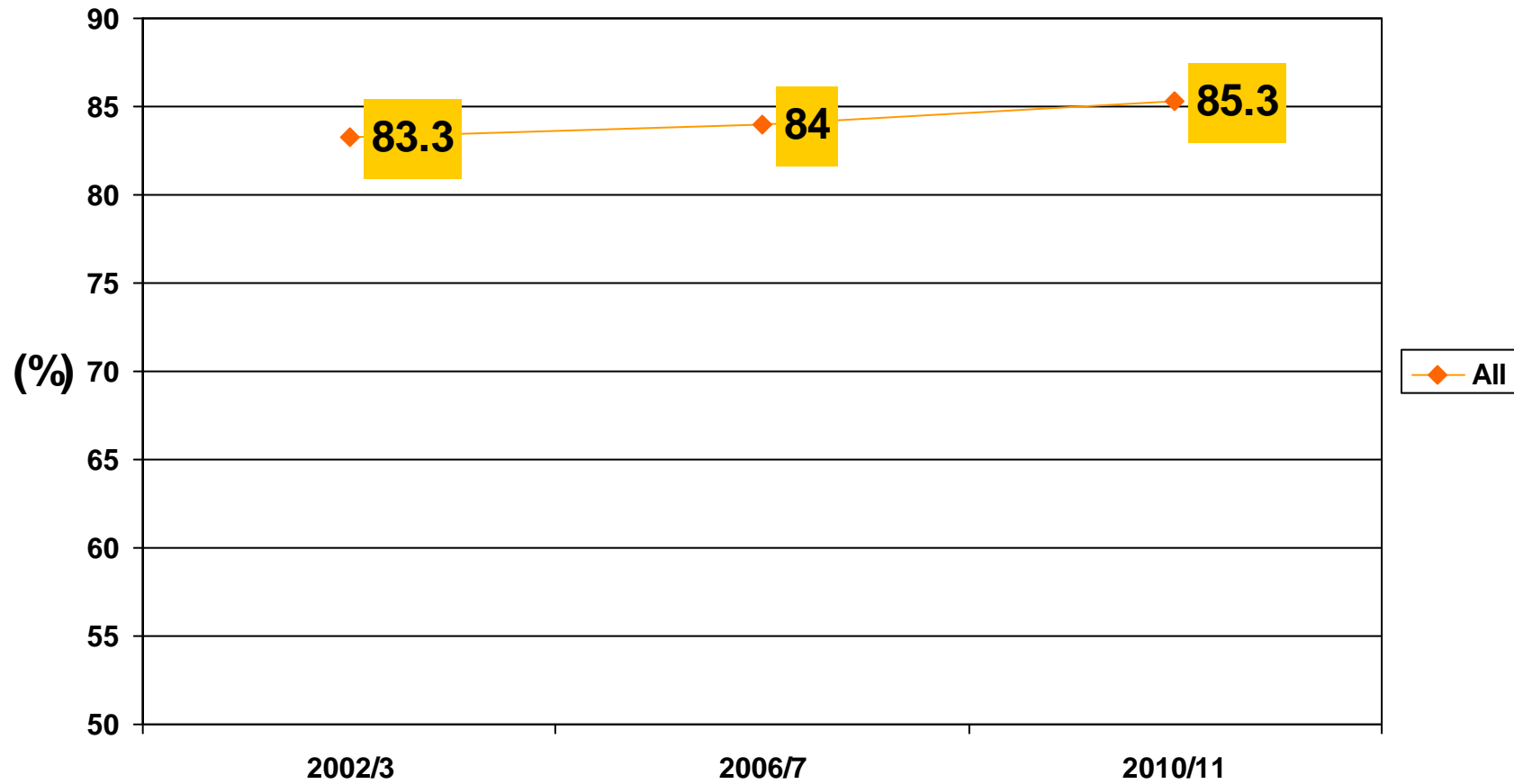
Last Year (%)  
Anti-depressants by  
age by gender



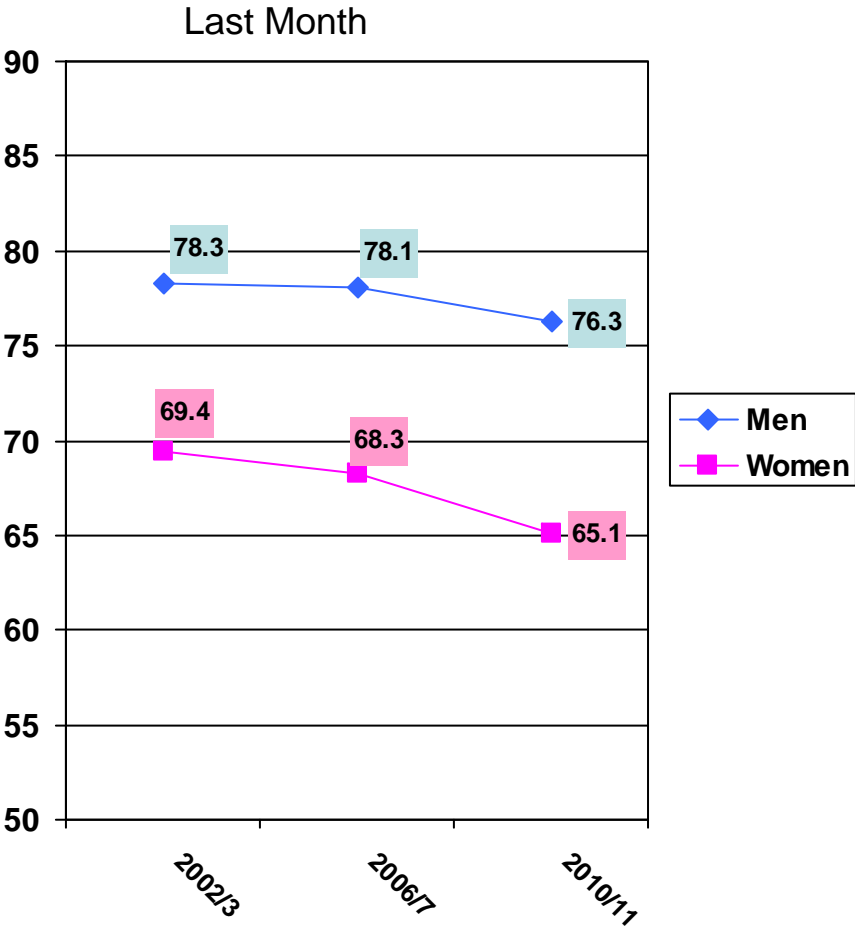
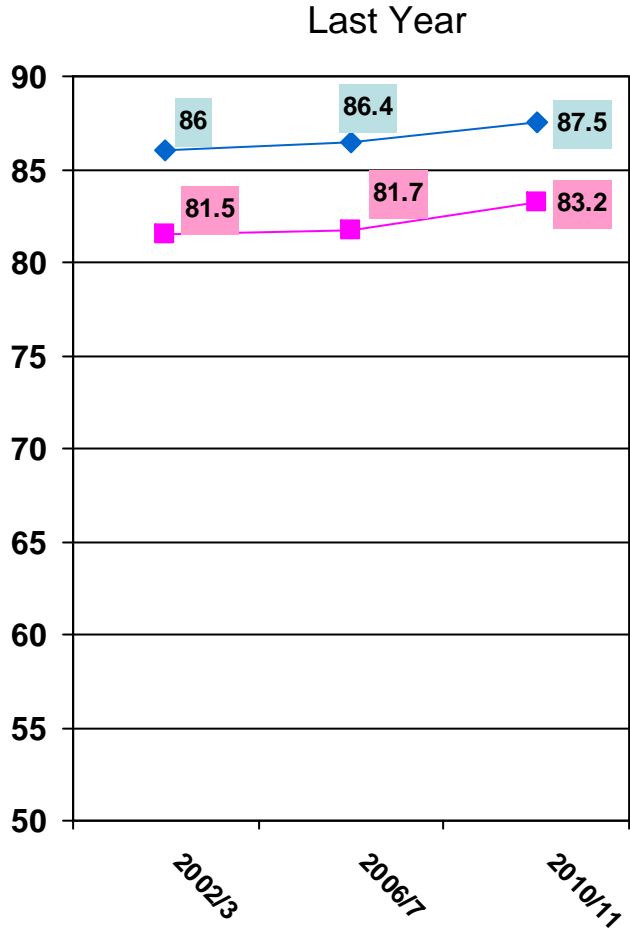
Last Year (%) Other opiates prescription/'over the counter' drugs by age by gender



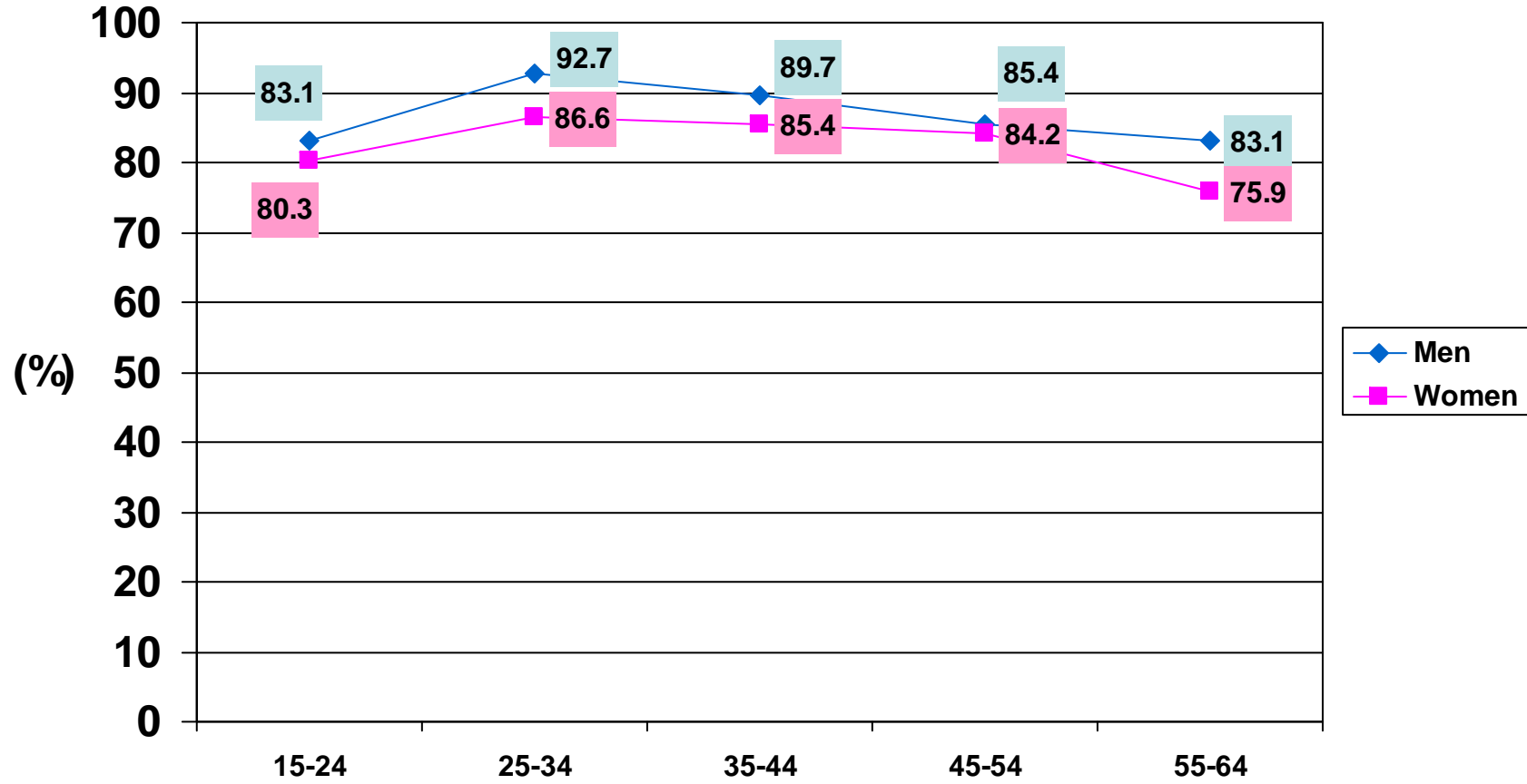
# Last Year (%) Alcohol Trend 2002/3, 2006/7 and 2010/11



# Last Year and Last Month Alcohol consumption by gender



Last year (%) alcohol use by age by gender



# Summary

---

- Any illegal drug
  - Increase between 2002-2006
  - Stabilisation between 2006-2010
- Men's use of illicit drugs continues to be higher than women's use
  - Gender gap persistent
- Cannabis and New Psychoactive Substances
  - Most used among 15-24 yrs
- Cocaine
  - Most now most used among 25-34 yrs (change since 2006)
- Licit substances (except alcohol)
  - Higher among women than men
  - Most used among older age groups (both men & women)
- Alcohol
  - Slight increase over the period
  - Higher among men than women
  - Widely consumed by all age groups

# Thank you

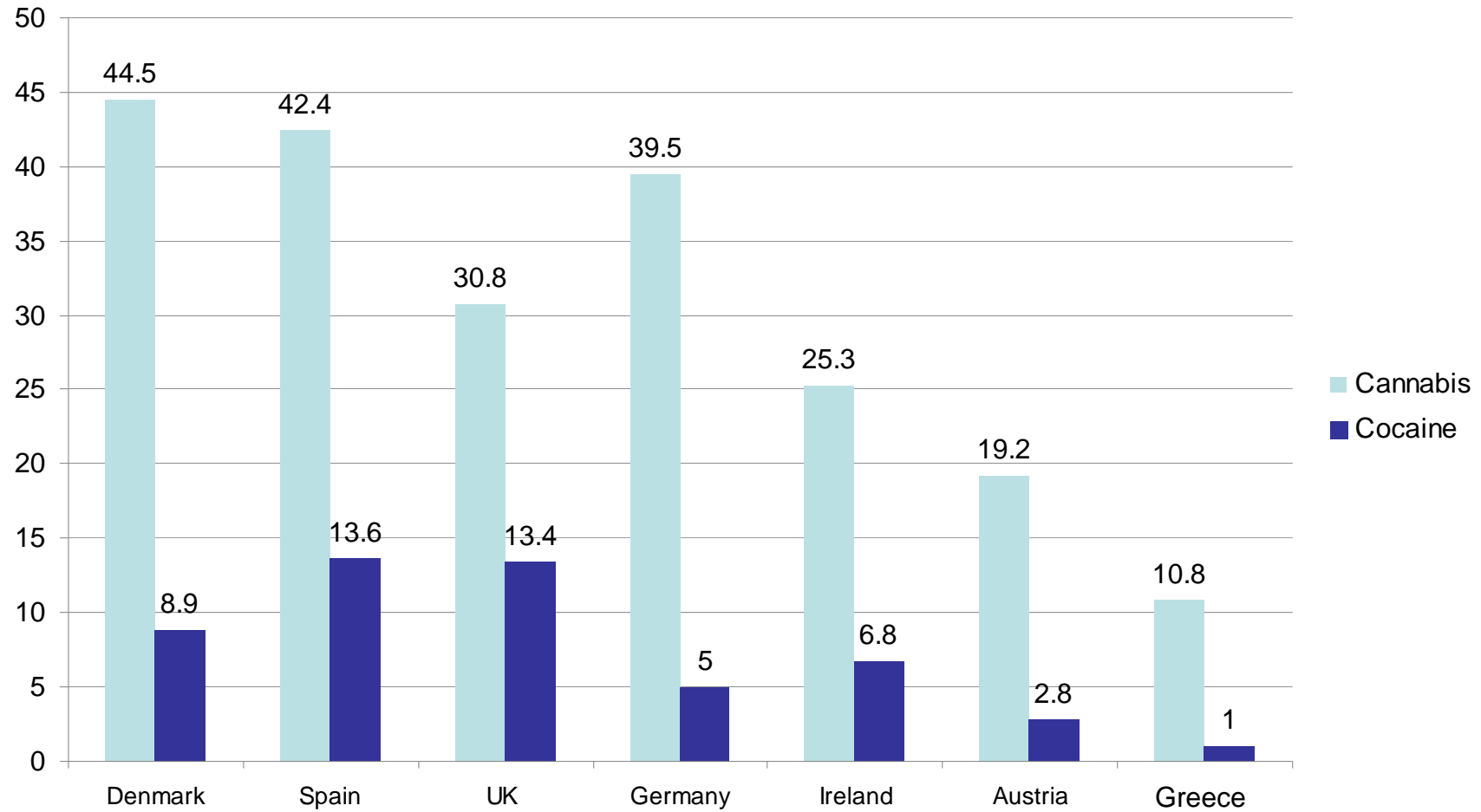


## NACD

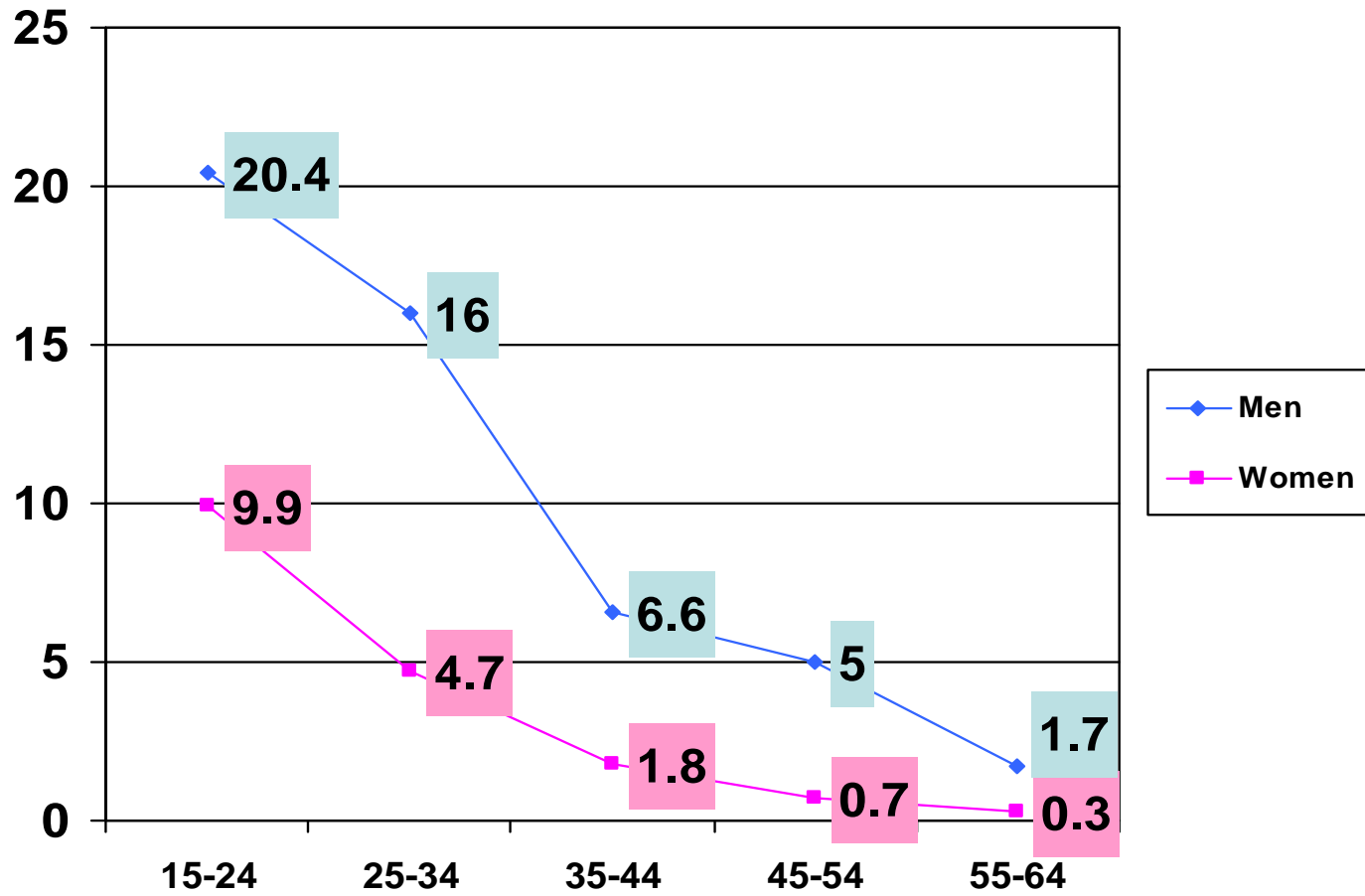
National Advisory  
Committee on Drugs

## Extra Slides

# Lifetime prevalence (%) of cannabis and cocaine (selected EU countries)



# Last year (%) Any illegal drug use by age by gender



# Last Year Prevalence (%) (15-64) ROI & NI

